

Homogeniser



4M8-TriX
Formatrix

**APPROVED
SCALABILITY**



Modularity Member!

General Description

Vessel size	Batch capacity
2 litre	500-1500 ml

- Multiple processes: creams, gels, toothpaste, suspensions, ...
- High flow, low shear homogeniser: size reduction down to 5 µm
- Vacuum processing: powder loading, deaeration
- Different levels of control modules possible (see modular documentation)
- Integrated on a trolley, wall mounted or on a table stand



Homogeniser



4M8-TriX
Formatrix

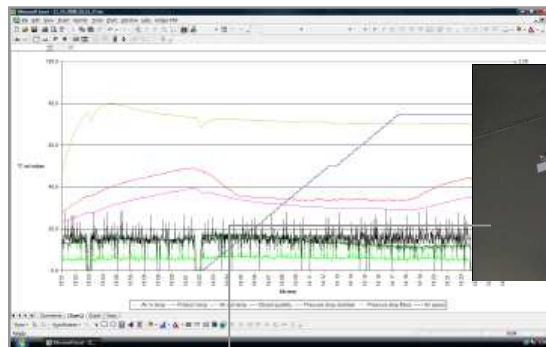
Simple to use & full transparency

- Full transparent plexi cover and process vessel
- Easy cleanability and strip down of components in minutes
- Installation in containment isolator possible
- Disposable process section for highly toxic applications



High Accuracy

- Critical process data such as temperatures, pressure, torque and speeds are handled by the control unit
- Real time graphs and batch reporting capability



Time	Temp	Pressure	Torque	Speed	...
0000	1.0	1.0	1.0	1.0	...
0001	1.0	1.0	1.0	1.0	...
0002	1.0	1.0	1.0	1.0	...
0003	1.0	1.0	1.0	1.0	...
0004	1.0	1.0	1.0	1.0	...
0005	1.0	1.0	1.0	1.0	...
0006	1.0	1.0	1.0	1.0	...
0007	1.0	1.0	1.0	1.0	...
0008	1.0	1.0	1.0	1.0	...
0009	1.0	1.0	1.0	1.0	...
0010	1.0	1.0	1.0	1.0	...
0011	1.0	1.0	1.0	1.0	...
0012	1.0	1.0	1.0	1.0	...
0013	1.0	1.0	1.0	1.0	...
0014	1.0	1.0	1.0	1.0	...
0015	1.0	1.0	1.0	1.0	...
0016	1.0	1.0	1.0	1.0	...
0017	1.0	1.0	1.0	1.0	...
0018	1.0	1.0	1.0	1.0	...
0019	1.0	1.0	1.0	1.0	...
0020	1.0	1.0	1.0	1.0	...
0021	1.0	1.0	1.0	1.0	...
0022	1.0	1.0	1.0	1.0	...
0023	1.0	1.0	1.0	1.0	...
0024	1.0	1.0	1.0	1.0	...
0025	1.0	1.0	1.0	1.0	...
0026	1.0	1.0	1.0	1.0	...
0027	1.0	1.0	1.0	1.0	...
0028	1.0	1.0	1.0	1.0	...
0029	1.0	1.0	1.0	1.0	...
0030	1.0	1.0	1.0	1.0	...
0031	1.0	1.0	1.0	1.0	...
0032	1.0	1.0	1.0	1.0	...
0033	1.0	1.0	1.0	1.0	...
0034	1.0	1.0	1.0	1.0	...
0035	1.0	1.0	1.0	1.0	...
0036	1.0	1.0	1.0	1.0	...
0037	1.0	1.0	1.0	1.0	...
0038	1.0	1.0	1.0	1.0	...
0039	1.0	1.0	1.0	1.0	...
0040	1.0	1.0	1.0	1.0	...
0041	1.0	1.0	1.0	1.0	...
0042	1.0	1.0	1.0	1.0	...
0043	1.0	1.0	1.0	1.0	...
0044	1.0	1.0	1.0	1.0	...
0045	1.0	1.0	1.0	1.0	...
0046	1.0	1.0	1.0	1.0	...
0047	1.0	1.0	1.0	1.0	...
0048	1.0	1.0	1.0	1.0	...
0049	1.0	1.0	1.0	1.0	...
0050	1.0	1.0	1.0	1.0	...
0051	1.0	1.0	1.0	1.0	...
0052	1.0	1.0	1.0	1.0	...
0053	1.0	1.0	1.0	1.0	...
0054	1.0	1.0	1.0	1.0	...
0055	1.0	1.0	1.0	1.0	...
0056	1.0	1.0	1.0	1.0	...
0057	1.0	1.0	1.0	1.0	...
0058	1.0	1.0	1.0	1.0	...
0059	1.0	1.0	1.0	1.0	...
0060	1.0	1.0	1.0	1.0	...
0061	1.0	1.0	1.0	1.0	...
0062	1.0	1.0	1.0	1.0	...
0063	1.0	1.0	1.0	1.0	...
0064	1.0	1.0	1.0	1.0	...
0065	1.0	1.0	1.0	1.0	...
0066	1.0	1.0	1.0	1.0	...
0067	1.0	1.0	1.0	1.0	...
0068	1.0	1.0	1.0	1.0	...
0069	1.0	1.0	1.0	1.0	...
0070	1.0	1.0	1.0	1.0	...
0071	1.0	1.0	1.0	1.0	...
0072	1.0	1.0	1.0	1.0	...
0073	1.0	1.0	1.0	1.0	...
0074	1.0	1.0	1.0	1.0	...
0075	1.0	1.0	1.0	1.0	...
0076	1.0	1.0	1.0	1.0	...
0077	1.0	1.0	1.0	1.0	...
0078	1.0	1.0	1.0	1.0	...
0079	1.0	1.0	1.0	1.0	...
0080	1.0	1.0	1.0	1.0	...
0081	1.0	1.0	1.0	1.0	...
0082	1.0	1.0	1.0	1.0	...
0083	1.0	1.0	1.0	1.0	...
0084	1.0	1.0	1.0	1.0	...
0085	1.0	1.0	1.0	1.0	...
0086	1.0	1.0	1.0	1.0	...
0087	1.0	1.0	1.0	1.0	...
0088	1.0	1.0	1.0	1.0	...
0089	1.0	1.0	1.0	1.0	...
0090	1.0	1.0	1.0	1.0	...
0091	1.0	1.0	1.0	1.0	...
0092	1.0	1.0	1.0	1.0	...
0093	1.0	1.0	1.0	1.0	...
0094	1.0	1.0	1.0	1.0	...
0095	1.0	1.0	1.0	1.0	...
0096	1.0	1.0	1.0	1.0	...
0097	1.0	1.0	1.0	1.0	...
0098	1.0	1.0	1.0	1.0	...
0099	1.0	1.0	1.0	1.0	...
0100	1.0	1.0	1.0	1.0	...

